



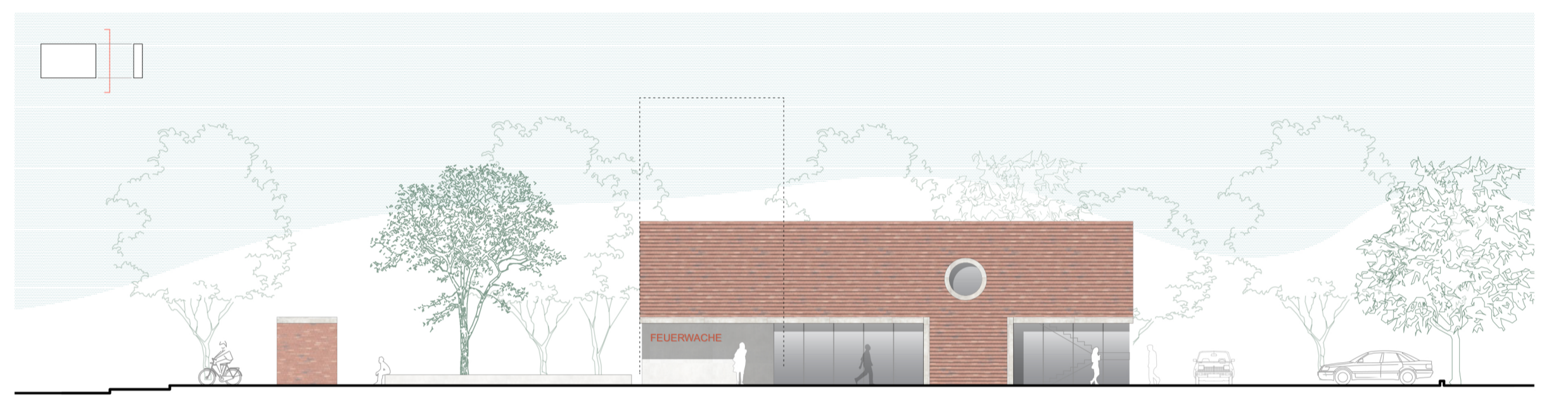
Lageplan | 1:500



Visualisierung | maßstabslos



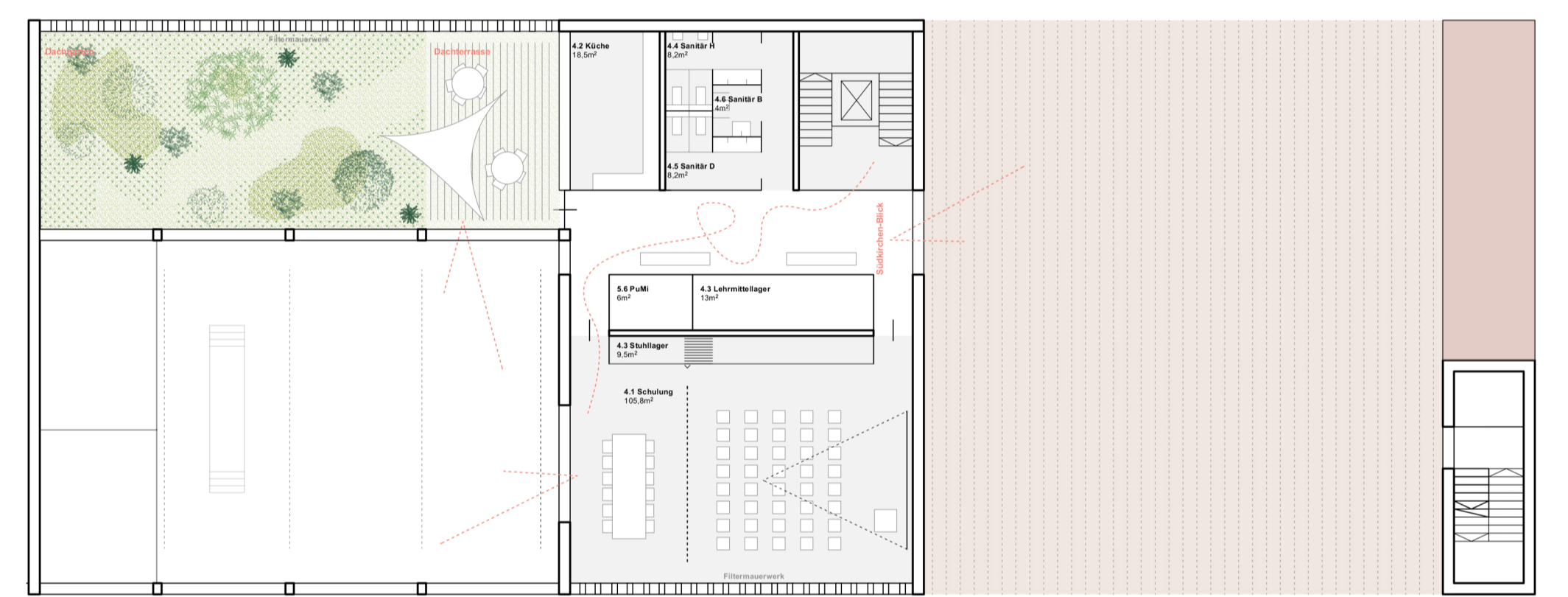
Ansicht Nord-West | 1:200



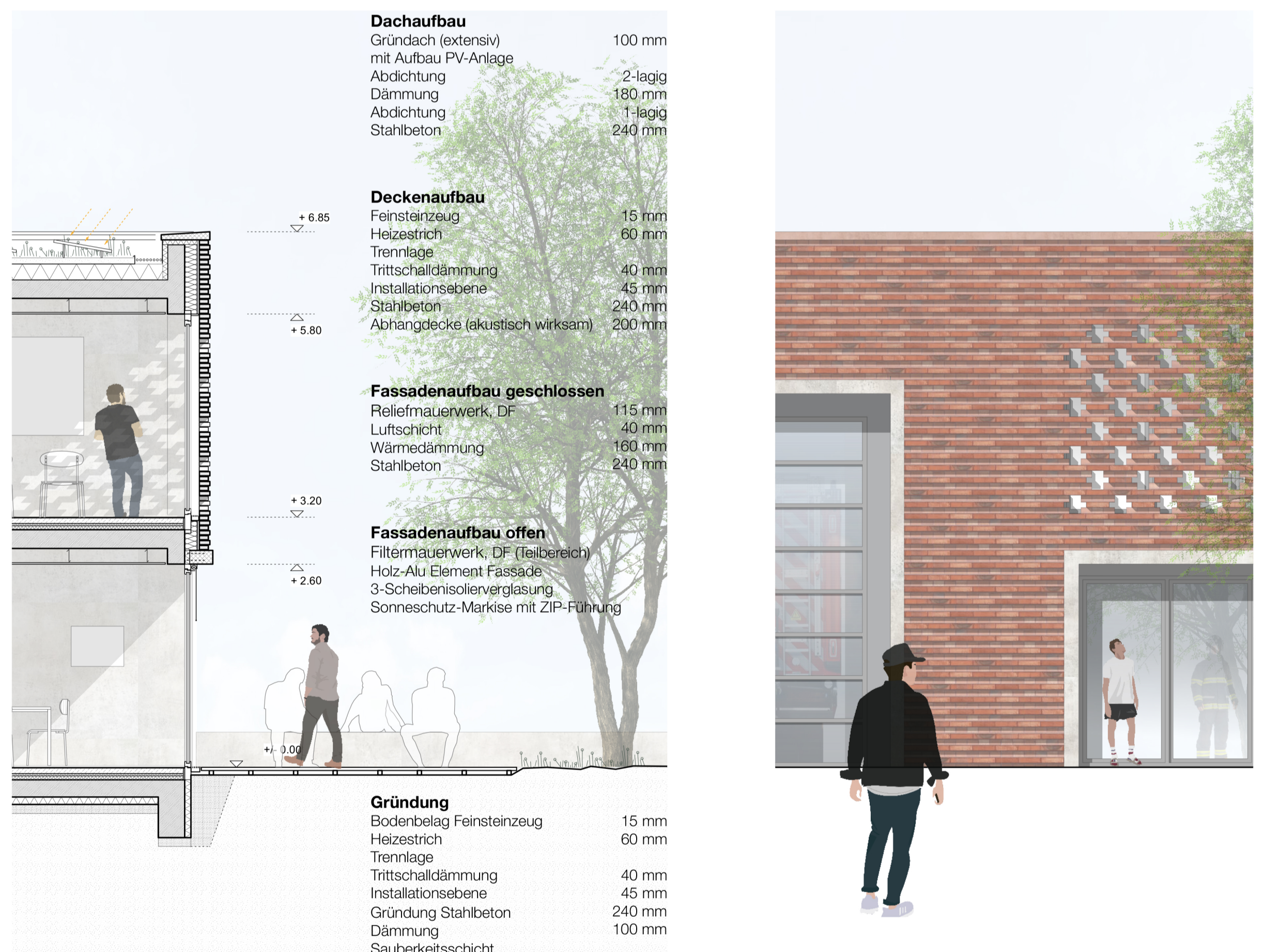
Ansicht Süd-West | 1:200



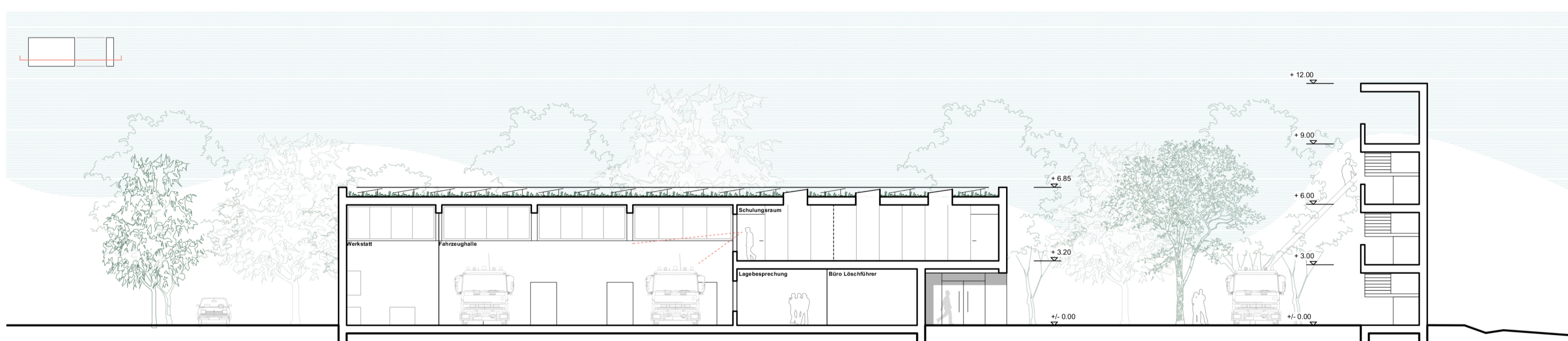
Grundriss Erdgeschoss | 1:200



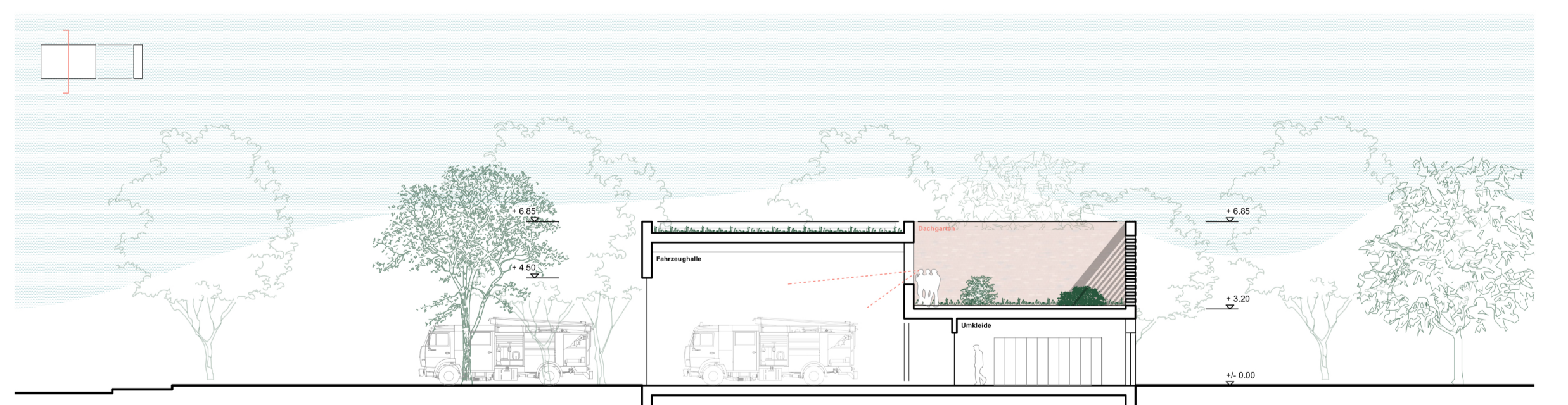
Grundriss Obergeschoss | 1:200



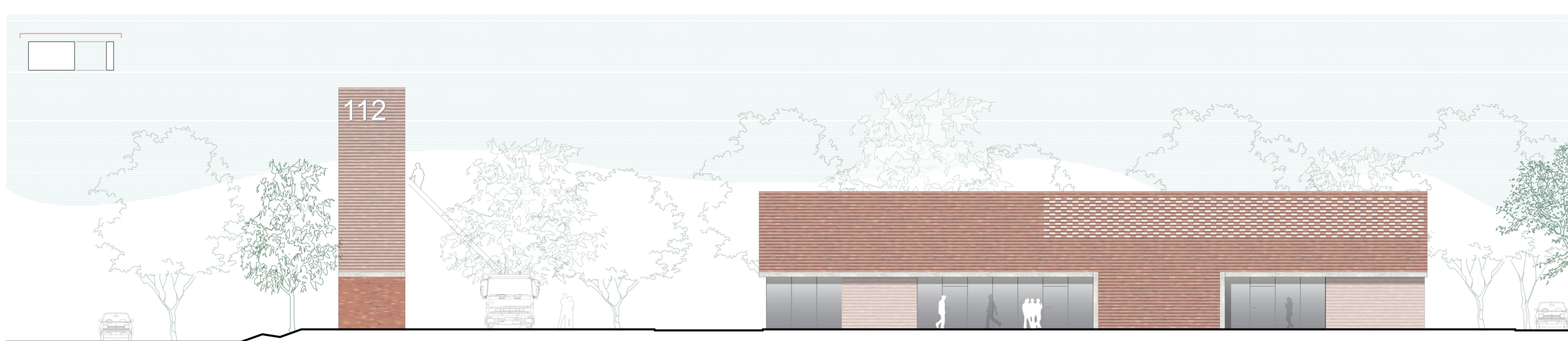
Fassadenschnitt | 1:50



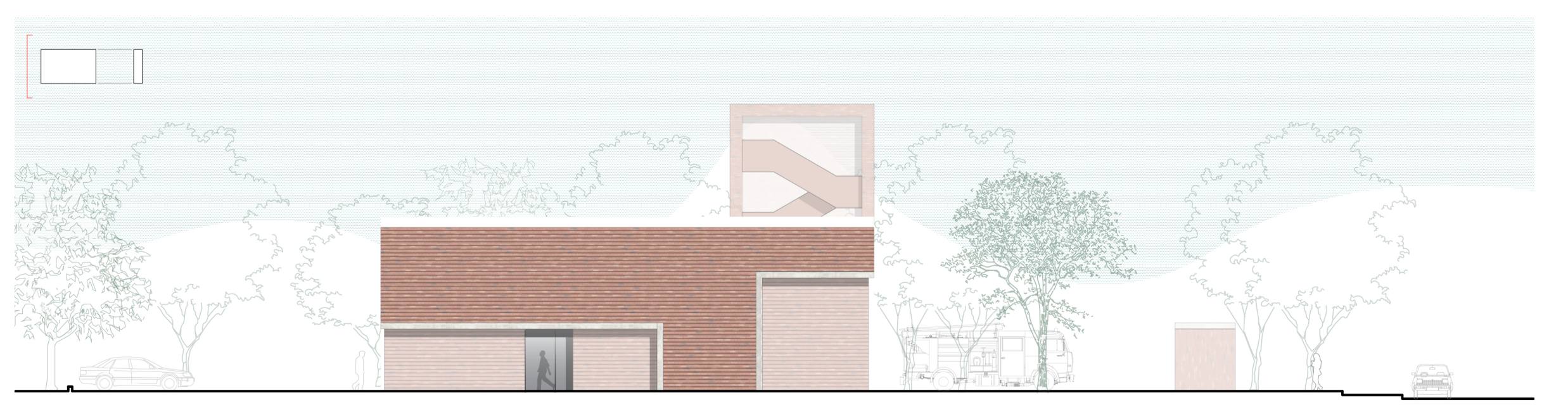
Schnitt A-A | 1:200



Schnitt B-B | 1:200



Ansicht Süd-Ost | 1:200



Ansicht Nord-Ost | 1:200